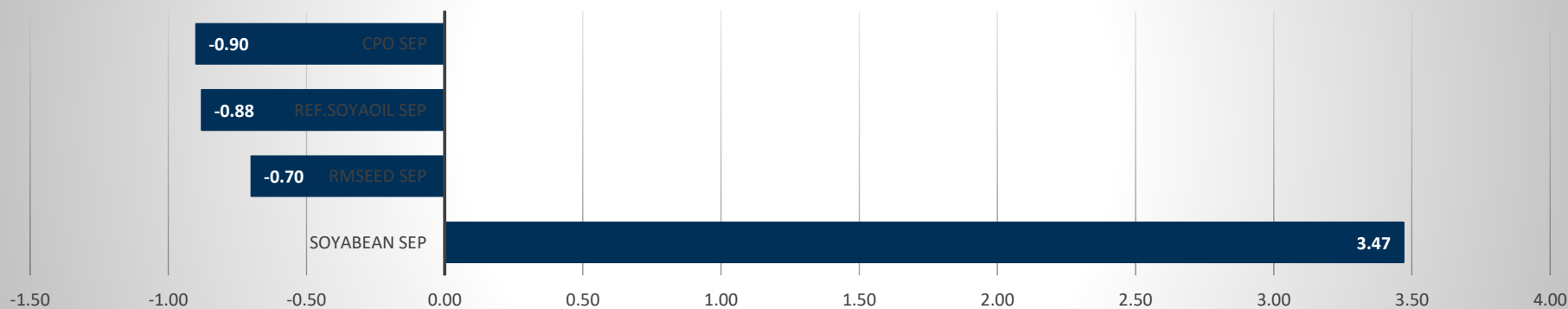


Commodity	Open	High	Low	Close	Rs.Chg	% Chg	Spot	Vol	OI	OI Chg	OI STATUS
Soyabean Sep	8194.00	8321.00	7951.00	8279.00	278.00	3.47	9206.00	6575	16165	-3.00	Short Covering
Rmseed Sep	8190.00	8205.00	8110.00	8141.00	-57.00	-0.70	8355.00	14520	18940	-10.19	Long Liquidation
Ref.Soyaoil Sep	1386.40	1394.00	1370.50	1372.90	-12.20	-0.88	1399.60	17325	26145	-9.30	Long Liquidation
Cpo Sep	1137.40	1146.00	1125.40	1128.80	-10.30	-0.90	1194.80	1725	3970	3.36	Fresh Selling

Commodity	Daily Levels								Trend	Performance			
	Close	Res - 3	Res - 2	Res - 1	Pivot	Sup - 1	Sup - 2	Sup - 3		1 Week	1 Month	3 Month	1 Year
Soyabean Sep	8279.00	8787.0	8554.0	8417.0	8184.0	8047.0	7814.0	7677.0	Positive	1.52	-15.39	16.98	52.36
Rmseed Sep	8141.00	8289.0	8247.0	8194.0	8152.0	8099.0	8057.0	8004.0	Negative	1.85	6.44	14.04	35.86
Ref.Soyaoil Sep	1372.90	1412.0	1403.0	1388.0	1379.0	1364.0	1355.0	1340.0	Negative	-1.72	-1.27	0.53	35.61
Cpo Sep	1128.80	1162.0	1154.0	1141.4	1133.4	1120.8	1112.8	1100.2	Negative	-4.24	-3.80	-4.32	32.75

## Price Movement



## DAILY SOYABEAN SYNOPSIS

Expiry	Open	High	Low	Close	Rs.Chg	% Chg	Spot	Vol	OI	OI % Chg	Fut-Spot	OI STATUS
20 SEP 2021	8194.00	8321.00	7951.00	8279.00	278.00	3.47	9206.00	6575	16165	-3.00	-927.00	Short Covering
20 OCT 2021	6290.00	6349.00	6232.00	6325.00	44.00	0.70	9206.00	6195	20125	9.43	-2881.00	Fresh Buying
18 NOV 2021	6030.00	6100.00	6011.00	6072.00	22.00	0.36	9206.00	1020	9555	-1.29	-3134.00	Short Covering

- Soyabean trading range for the day is 7814-8554.
- Soyabean gained as in Marathwada, there were concerns about mosaic virus, as well as infestation of pink and American bollworm.
- As per the USDA report the 2021/22 global oilseed supply and demand forecasts include lower production, crush, exports
- Brazil said that they will be reducing there mandatory bio-diesel blend to 10% from 12%.
- At the Indore spot market in top producer MP, soybean gained 194 Rupees to 9206 Rupees per 100 kgs.

### CHART



### TECHNICALS

#### Simple Moving Average

5 Days	10 Days	20 Days	50 Days	100 Days	200 Days
8198	7955	8581	8024	7545	6155
SELL	SELL	SELL	SELL	BUY	BUY

#### Exponential Moving Average

5 Days	10 Days	20 Days	50 Days	100 Days	200 Days
7979	8105	8251	8045	7457	6538
SELL	SELL	SELL	SELL	BUY	BUY

#### Spread

Month	Rate	SEP	OCT	NOV
SEP	8279		-1954	-2207
OCT	6325			-253
NOV	6072			

## DAILY RMSEED SYNOPSIS

Expiry	Open	High	Low	Close	Rs.Chg	% Chg	Spot	Vol	OI	OI % Chg	Fut-Spot	OI STATUS
20 SEP 2021	8190.00	8205.00	8110.00	8141.00	-57.00	-0.70	8355.00	14520	18940	-10.19	-214.00	Long Liquidation
20 OCT 2021	8260.00	8275.00	8162.00	8204.00	-57.00	-0.69	8355.00	19790	31220	4.45	-151.00	Fresh Selling
18 NOV 2021	8270.00	8299.00	8202.00	8248.00	-48.00	-0.58	8355.00	510	8160	-0.85	-107.00	Long Liquidation

- Rmseed trading range for the day is 8057-8247.
- Rmseed dropped on profit booking after prices gained amid regular demand from the stockists and lowering all India arrivals.
- In their August report, the IGC lowered their forecast for the world rapeseed production to 70.9 million tons.
- USDA estimates Canada rapeseed production for marketing year 2021/22 at 16.0 million metric tons (mmt), down 4.2 mmt (21 percent) from last month.
- In Alwar spot market in Rajasthan the prices gained 141.6 Rupees to end at 8355 Rupees per 100 kg.

## CHART



## TECHNICALS

### Simple Moving Average

5 Days	10 Days	20 Days	50 Days	100 Days	200 Days
8106	8002	7859	7417	7176	6460
SELL	SELL	BUY	BUY	BUY	BUY

### Exponential Moving Average

5 Days	10 Days	20 Days	50 Days	100 Days	200 Days
8045	7989	7855	7531	7146	6595
SELL	BUY	BUY	BUY	BUY	BUY

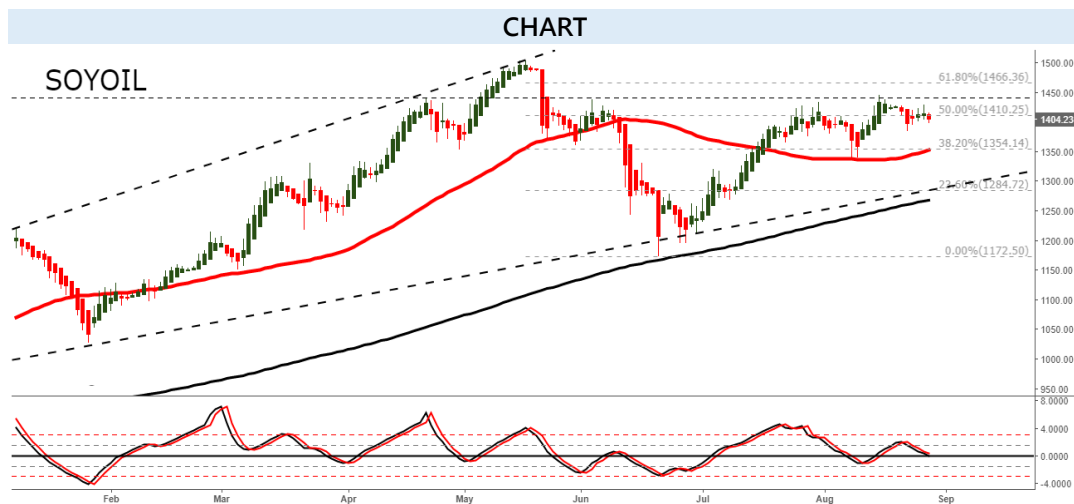
### Spread

Month	Rate	SEP	OCT	NOV
SEP	8141		63	107
OCT	8204			44
NOV	8248			

## DAILY SOYOIL SYNOPSIS

Expiry	Open	High	Low	Close	Rs.Chg	% Chg	Spot	Vol	OI	OI % Chg	Fut-Spot	OI STATUS
20 SEP 2021	1386.40	1394.00	1370.50	1372.90	-12.20	-0.88	1399.60	17325	26145	-9.30	-26.70	Long Liquidation
20 OCT 2021	1370.40	1375.00	1355.20	1357.50	-11.20	-0.82	1399.60	11140	10615	22.50	-42.10	Fresh Selling
18 NOV 2021	1344.20	1351.10	1336.00	1340.80	-12.50	-0.92	1399.60	400	610	48.78	-58.80	Fresh Selling

- Ref.Soya oil trading range for the day is 1355-1403.
- Ref soyoil dropped amid reports of Brazil harvesting a bigger crop from last year and India to allow soymeal import.
- The Government has reduced the import duty of Soyadegum oil to 7.50 percent from 15 percent earlier.
- Edible oil prices are likely to remain elevated till the arrival of new crop in the October-November period, industry officials said.
- At the Indore spot market in Madhya Pradesh, soyoil was steady at 1399.6 Rupees per 10 kgs.

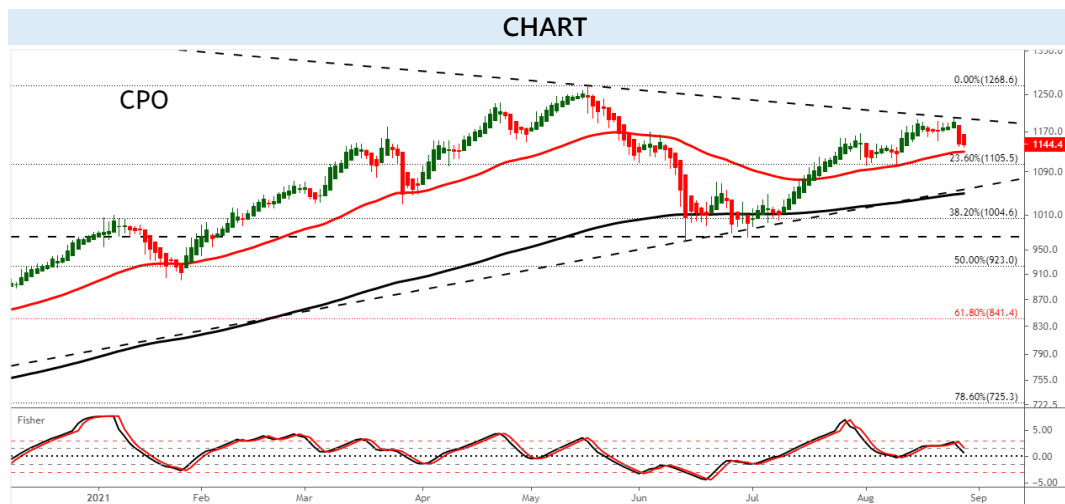


TECHNICALS						
Simple Moving Average						
	5 Days	10 Days	20 Days	50 Days	100 Days	200 Days
	1409.7	1407.1	1396.3	1349.4	1366.3	1261.8
	SELL	SELL	BUY	BUY	BUY	BUY
Exponential Moving Average						
	5 Days	10 Days	20 Days	50 Days	100 Days	200 Days
	1407.5	1404.7	1396.2	1372.5	1339.0	1255.1
	SELL	SELL	BUY	BUY	BUY	BUY
Spread						
Month	Rate	SEP	OCT	NOV		
SEP	1372.9		-15.4	-32.1		
OCT	1357.5			-16.7		
NOV	1340.8					

## DAILY CRUDE PALM OIL SYNOPSIS

Expiry	Open	High	Low	Close	Rs.Chg	% Chg	Spot	Vol	OI	OI % Chg	Fut-Spot	OI STATUS
30 SEP 2021	1137.40	1146.00	1125.40	1128.80	-10.30	-0.90	1194.80	1725	3970	3.36	-66.00	Fresh Selling
29 OCT 2021	1118.50	1124.40	1105.00	1106.80	-12.20	-1.09	1194.80	350	599	20.28	-88.00	Fresh Selling
30 NOV 2021	0.00	0.00	0.00	1103.00	-11.00	-0.99	1194.80	0	2	0.00	-91.80	Long Liquidation

- CPO trading range for the day is 1112.8-1154.
- Crude palm oil dropped as Malaysia's Aug palm oil exports fall 15.8 percent
- Exports of Malaysian palm oil products for August fell 15.8 percent to 1,213,126 tonnes from 1,440,096 tonnes shipped during July
- Slow palm oil output growth to lift Malaysia's 2021 average prices to 3,600 rgt/T – MPOB
- In spot market, Crude palm oil dropped by -1.2 Rupees to end at 1194.8 Rupees.



### TECHNICALS

#### Simple Moving Average

5 Days	10 Days	20 Days	50 Days	100 Days	200 Days
1193.2	1185.5	1163.2	1109.8	1139.7	1072.0
BUY	BUY	BUY	BUY	BUY	BUY

#### Exponential Moving Average

5 Days	10 Days	20 Days	50 Days	100 Days	200 Days
1193.9	1185.1	1168.5	1139.6	1117.8	1056.3
BUY	BUY	BUY	BUY	BUY	BUY

#### Spread

Month	Rate	SEP	OCT	NOV
SEP	1128.8		-22.0	-25.8
OCT	1106.8			-3.8
NOV	1103.0			

## SOYABEAN PRICE MOVEMENT SINCE 2012

Year						Sowing			Growth	Harvesting			Crop Calendar
	JAN	FEB	MAR	APR	MAY	JUN	JUL	AUG	SEP	OCT	NOV	DEC	
2012	2451.50	2668.50	3085.50	3625.00	3404.00	3968.50	4370.50	3947.50	3201.50	3298.00	3209.50	3203.00	689.00
	-2.49	8.85	15.63	17.49	-6.10	16.58	10.13	-9.68	-18.90	3.01	-2.68	-0.20	27.41
2013	3287.50	3324.50	3641.00	3932.00	3810.00	3670.50	2973.00	3470.00	3531.00	3925.00	3860.00	3819.00	616.00
	2.64	1.13	9.52	7.99	-3.10	-3.66	-19.00	16.72	1.76	11.16	-1.66	-1.06	19.23
2014	3926.50	4165.00	4311.50	4777.50	4592.00	4094.00	3639.00	3358.00	2963.00	3289.00	3300.00	3366.00	-453.00
	2.81	6.07	3.52	10.81	-3.88	-10.84	-11.11	-7.72	-11.76	11.00	0.33	2.00	-11.86
2015	3434.00	3406.00	3458.00	4025.00	3890.00	3329.00	3160.00	3218.00	3429.00	3909.00	3907.00	3880.00	514.00
	2.02	-0.82	1.53	16.40	-3.35	-14.42	-5.08	1.84	6.56	14.00	-0.05	-0.69	15.27
2016	3726.00	3664.00	4010.00	3927.00	3835.00	3740.00	3557.00	3257.00	3235.00	3114.00	3116.00	3029.00	-851.00
	-3.97	-1.66	9.44	-2.07	-2.34	-2.48	-4.89	-8.43	-0.68	-3.74	0.06	-2.79	-21.93
2017	3092.00	3007.00	2941.00	3002.00	2762.00	2925.00	3154.00	3097.00	3033.00	2823.00	3098.00	3118.00	89.00
	2.08	-2.75	-2.19	2.07	-7.99	5.90	7.83	-1.81	-2.07	-6.92	9.74	0.65	2.94
2018	3685.00	3802.00	3756.00	3669.00	3549.00	3566.00	3392.00	3222.00	3233.00	3269.00	3354.00	3399.00	281.00
	18.18	3.18	-1.21	-2.32	-3.27	0.48	-4.88	-5.01	0.34	1.11	2.60	1.34	9.01
2019	3826.00	3637.00	3681.00	3676.00	3718.00	3671.00	3582.00	3825.00	3939.00	3863.00	4072.00	4436.00	1037.00
	12.56	-4.94	1.21	-0.14	1.14	-1.26	-2.42	6.78	2.98	-1.93	5.41	8.94	30.51
2020	4084.00	3708.00	3796.00	3810.00	3830.00	3714.00	3780.00	4116.00	3866.00	4263.00	4415.00	4606.00	170.00
	-7.94	-9.21	2.37	0.37	0.52	-3.03	1.78	8.89	-6.07	10.27	3.57	4.33	3.83
2021	4644.00	5078.00	5993.00	7107.00	6873.00	7181.00	10081.00	8001.00					3395.00
	0.83	9.35	18.02	18.59	-3.29	4.48	40.38	-20.63					73.71
Average	1.48	0.61	4.39	6.05	-2.92	-1.32	2.24	-1.85	-3.80	4.69	1.94	2.82	Average

## RMSEED PRICE MOVEMENT SINCE 2012

Year	Growth		Harvesting										Sowing			Crop Calendar
	JAN	FEB	MAR	APR	MAY	JUN	JUL	AUG	SEP	OCT	NOV	DEC				
2012	3346.00 1.06	3632.00 8.55	3925.00 8.07	4130.00 5.22	3901.00 -5.54	3990.00 2.28	4397.00 10.20	4452.00 1.25	3927.00 -11.79	4269.00 8.71	4214.00 -1.29	3544.00 -15.90	233.00 7.04			
2013	3492.00 -1.47	3428.00 -1.83	3479.00 1.49	3505.00 0.75	3514.00 0.26	3451.00 -1.79	3182.00 -7.79	3571.00 12.23	3641.00 1.96	3878.00 6.51	3811.00 -1.73	3469.00 -8.97	-75.00 -2.12			
2014	3353.00 -3.34	3537.00 5.49	3504.00 -0.93	3594.00 2.57	3456.00 -3.84	3595.00 4.02	3641.00 1.28	3592.00 -1.35	3693.00 2.81	3763.00 1.90	3885.00 3.24	3524.00 -9.29	55.00 1.59			
2015	3378.00 -4.14	3406.00 0.83	3411.00 0.15	3869.00 13.43	4306.00 11.29	4255.00 -1.18	4232.00 -0.54	4317.00 2.01	4514.00 4.56	4923.00 9.06	4897.00 -0.53	4244.00 -13.33	720.00 20.43			
2016	3877.00 -8.65	3929.00 1.34	4202.00 6.95	4472.00 6.43	4503.00 0.69	4848.00 7.66	4875.00 0.56	4681.00 -3.98	4642.00 -0.83	4498.00 -3.10	4876.00 8.40	3974.00 -18.50	604.00 14.23			
2017	3834.00 -3.52	3848.00 0.37	3908.00 1.56	3759.00 -3.81	3483.00 -7.34	3609.00 3.62	3699.00 2.49	3771.00 1.95	3739.00 -0.85	3897.00 4.23	4104.00 5.31	3939.00 -4.02	-35.00 -0.88			
2018	4187.00 6.30	4125.00 -1.48	4054.00 -1.72	3795.00 -6.39	3958.00 4.30	4027.00 1.74	4214.00 4.64	4070.00 -3.42	4241.00 4.20	4170.00 -1.67	3977.00 -4.63	3929.00 -1.21	-10.00 -0.25			
2019	3983.00 1.37	3840.00 -3.59	3750.00 -2.34	3744.00 -0.16	3718.00 -0.69	3939.00 5.94	3950.00 0.28	3922.00 -0.71	3954.00 0.82	4306.00 8.90	4321.00 0.35	4658.00 7.80	729.00 18.55			
2020	4109.00 -11.79	4000.00 -2.65	4118.00 2.95	4141.00 0.56	4490.00 8.43	4650.00 3.56	5014.00 7.83	5410.00 7.90	5468.00 1.07	6067.00 10.95	5871.00 -3.23	5817.00 -0.92	1159.00 24.88			
2021	5604.00 -3.66	5536.00 -1.21	5682.00 2.64	6871.00 20.93	6998.00 1.85	6924.00 -1.06	7713.00 11.40	8198.00 6.29					2381.00 40.93			
Average	-2.47	0.32	1.13	3.81	1.30	2.12	3.12	1.95	-0.27	5.41	0.88	-6.07	Average			

## SOYOIL PRICE MOVEMENT SINCE 2012

	JAN	FEB	MAR	APR	MAY	JUN	JUL	AUG	SEP	OCT	NOV	DEC	Growth
2012	683.15	712.75	751.40	775.70	735.65	761.50	784.85	792.20	663.20	686.70	720.25	695.80	-37.70
	-6.86	4.33	5.42	3.23	-5.16	3.51	3.07	0.94	-16.28	3.54	4.89	-3.39	-5.52
2013	737.35	680.85	688.10	719.30	715.05	673.00	651.95	703.20	686.20	748.85	713.80	698.10	2.30
	5.97	-7.66	1.06	4.53	-0.59	-5.88	-3.13	7.86	-2.42	9.13	-4.68	-2.20	0.31
2014	683.55	716.65	705.45	718.50	676.60	693.45	676.60	610.65	614.00	599.85	576.80	638.05	-60.05
	-2.08	4.84	-1.56	1.85	-5.83	2.49	-2.43	-9.75	0.55	-2.30	-3.84	10.62	-8.79
2015	620.10	595.40	583.60	582.50	613.00	588.15	574.70	574.15	598.05	611.30	619.65	614.50	-23.55
	-2.81	-3.98	-1.98	-0.19	5.24	-4.05	-2.29	-0.10	4.16	2.22	1.37	-0.83	-3.80
2016	610.10	617.40	642.50	657.60	656.95	644.10	631.30	645.95	661.45	674.30	727.65	706.95	92.45
	-0.72	1.20	4.07	2.35	-0.10	-1.96	-1.99	2.32	2.40	1.94	7.91	-2.84	15.15
2017	686.10	664.35	623.10	610.85	622.80	641.90	657.35	664.05	664.70	686.10	746.45	727.50	20.55
	-2.95	-3.17	-6.21	-1.97	1.96	3.07	2.41	1.02	0.10	3.22	8.80	-2.54	3.00
2018	743.85	760.85	786.85	764.75	776.40	756.20	742.30	739.75	748.30	754.85	719.95	730.10	2.60
	2.25	2.29	3.42	-2.81	1.52	-2.60	-1.84	-0.34	1.16	0.88	-4.62	1.41	0.35
2019	775.80	756.85	728.75	740.05	755.30	745.10	733.90	755.05	764.50	773.65	814.40	933.20	203.10
	6.26	-2.44	-3.71	1.55	2.06	-1.35	-1.50	2.88	1.25	1.20	5.27	14.59	26.18
2020	851.20	767.60	828.00	787.20	785.20	799.10	864.70	892.90	904.10	963.40	1072.30	1190.10	256.90
	-8.79	-9.82	7.87	-4.93	-0.25	1.77	8.21	3.26	1.25	6.56	11.30	10.99	30.18
2021	1105.50	1192.40	1269.50	1360.70	1365.60	1222.60	1409.50	1385.10					195.00
	-7.11	7.86	6.47	7.18	0.36	-10.47	15.29	-1.73					17.64
Average	-1.16	-1.01	0.93	1.39	0.43	-1.77	1.83	0.56	-1.49	2.70	2.90	4.14	Average



## CPO PRICE MOVEMENT SINCE 2012

	JAN	FEB	MAR	APR	MAY	JUN	JUL	AUG	SEP	OCT	NOV	DEC	Growth
2012	514.20	536.20	592.30	621.50	585.90	566.40	564.40	551.60	446.20	425.20	423.20	417.90	-127.50
	-5.72	4.28	10.46	4.93	-5.73	-3.33	-0.35	-2.27	-19.11	-4.71	-0.47	-1.25	-23.38
2013	438.20	450.80	454.90	464.90	480.50	502.20	496.60	568.70	532.40	557.20	558.30	540.20	122.30
	4.86	2.88	0.91	2.20	3.36	4.52	-1.12	14.52	-6.38	4.66	0.20	-3.24	29.27
2014	524.00	590.00	569.70	567.70	524.90	535.00	539.10	439.60	474.50	457.20	439.50	460.60	-79.60
	-3.00	12.60	-3.44	-0.35	-7.54	1.92	0.77	-18.46	7.94	-3.65	-3.87	4.80	-14.74
2015	425.00	466.10	434.40	435.40	456.80	451.40	417.60	360.50	425.70	400.80	382.40	411.00	-49.60
	-7.73	9.67	-6.80	0.23	4.92	-1.18	-7.49	-13.67	18.09	-5.85	-4.59	7.48	-10.77
2016	432.50	481.90	532.20	564.00	537.00	506.80	524.70	559.10	581.60	514.90	554.70	582.70	171.70
	5.23	11.42	10.44	5.98	-4.79	-5.62	3.53	6.56	4.02	-11.47	7.73	5.05	41.78
2017	587.50	544.90	538.80	516.80	512.70	490.80	488.70	518.20	547.80	545.30	589.60	554.60	-28.10
	0.82	-7.25	-1.12	-4.08	-0.79	-4.27	-0.43	6.04	5.71	-0.46	8.12	-5.94	-4.82
2018	560.60	587.50	651.80	642.60	653.10	643.40	616.80	599.50	594.00	593.50	500.70	511.60	-43.00
	1.08	4.80	10.94	-1.41	1.63	-1.49	-4.13	-2.80	-0.92	-0.08	-15.64	2.18	-7.75
2019	569.40	550.10	525.90	529.70	519.30	515.80	513.60	522.20	546.60	587.90	680.00	795.20	283.60
	11.30	-3.39	-4.40	0.72	-1.96	-0.67	-0.43	1.67	4.67	7.56	15.67	16.94	55.43
2020	771.80	689.00	679.50	632.10	658.20	700.50	740.10	763.60	772.50	830.90	872.00	972.20	177.00
	-2.94	-10.73	-1.38	-6.98	4.13	6.43	5.65	3.18	1.17	7.56	4.95	11.49	22.26
2021	946.00	1076.50	1132.00	1218.60	1177.60	1042.90	1144.90	1139.10					166.90
	-2.69	13.79	5.16	7.65	-3.36	-11.44	9.78	-0.51					17.17
Average	0.35	3.14	1.40	0.99	-0.67	-2.35	0.70	-0.47	1.33	-0.75	1.91	4.47	Average

# GENERAL DISCLAIMERS

KEDIA ADVISORY

This Report is prepared and distributed by Kedia Stocks & Commodities Research Pvt Ltd. for information purposes only. The recommendations, if any, made herein are expression of views and/or opinions and should not be deemed or construed to be neither advice for the purpose of purchase or sale through KSCRPL nor any solicitation or offering of any investment /trading opportunity. These information / opinions / views are not meant to serve as a professional investment guide for the readers. No action is solicited based upon the information provided herein. Recipients of this Report should rely on information/data arising out of their own investigations. Readers are advised to seek independent professional advice and arrive at an informed trading/investment decision before executing any trades or making any investments. This Report has been prepared on the basis of publicly available information, internally developed data and other sources believed by KSCRPL to be reliable. KSCRPL or its directors, employees, affiliates or representatives do not assume any responsibility for, or warrant the accuracy, completeness, adequacy and reliability of such information / opinions / views. While due care has been taken to ensure that the disclosures and opinions given are fair and reasonable, none of the directors, employees, affiliates or representatives of KSCRPL shall be liable for any direct, indirect, special, incidental, consequential, punitive or exemplary damages, including lost profits arising in any way whatsoever from the information / opinions / views contained in this Report. The possession, circulation and/or distribution of this Report may be restricted or regulated in certain jurisdictions by appropriate laws. No action has been or will be taken by KSCRPL in any jurisdiction (other than India), where any action for such purpose(s) is required. Accordingly, this Report shall not be possessed, circulated and/ or distributed in any such country or jurisdiction unless such action is in compliance with all applicable laws and regulations of such country or jurisdiction. KSCRPL requires such recipient to inform himself about and to observe any restrictions at his own expense, without any liability to KSCRPL. Any dispute arising out of this Report shall be subject to the exclusive jurisdiction of the Courts in India.

For more details, please **contact**:

 +91 9323406035 / 9619551022

 [info@kediaadvisory.com](mailto:info@kediaadvisory.com)

 [www.kediaadvisory.com](http://www.kediaadvisory.com)

KEDIA STOCKS & COMMODITIES RESEARCH PVT LTD.  
Mumbai, IN.

SEBI REGISTRATION NUMBER - INH000006156

